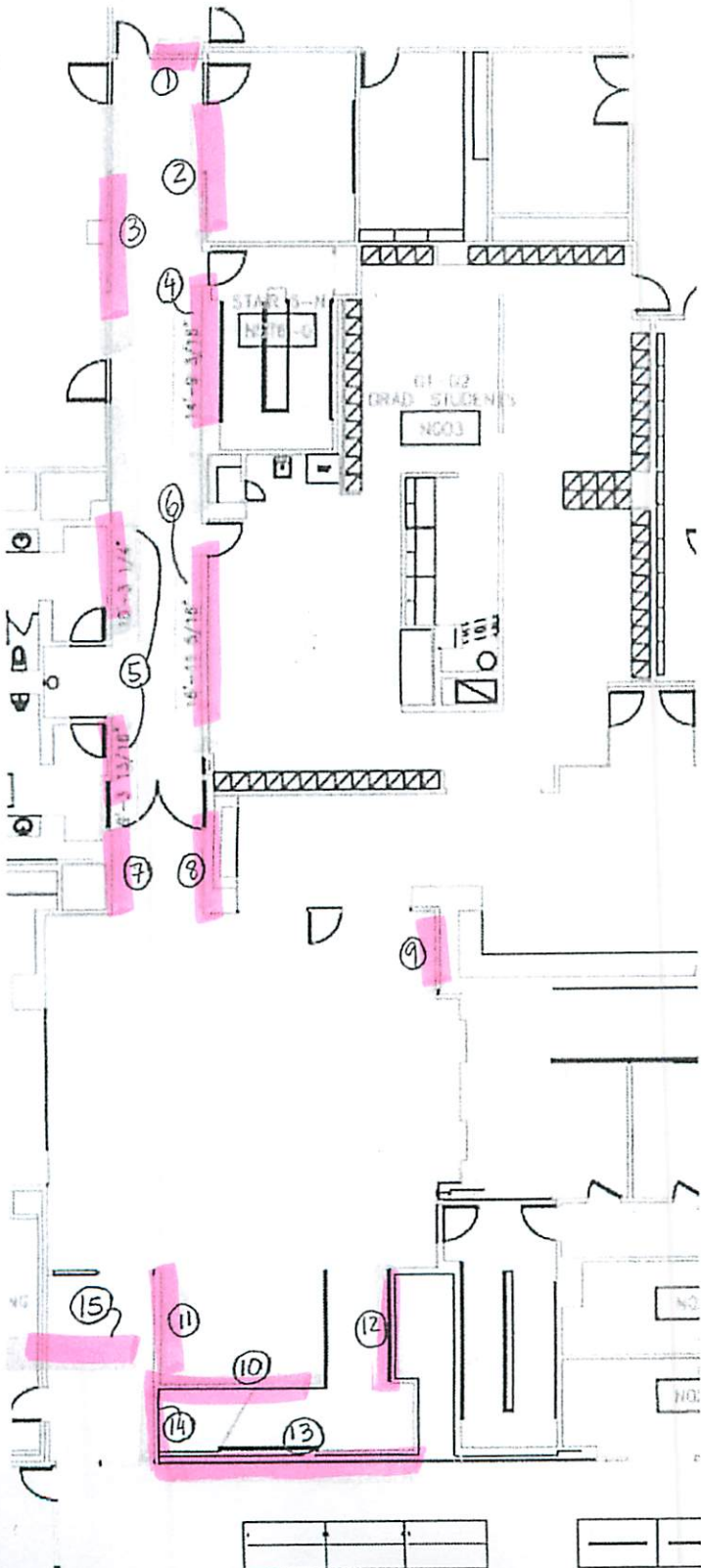


Knafel Concourse (KC) Gallery floor plan with Patch-and-Paint Charges Breakout.

Orientation: far left is Cambridge Street side, at top is CGIS Ops office (K051). Highlighted walls with circled numbers correspond to each wall's patch-and-paint cost. (Note: 15 refers to the lobby wall under the main staircase, between the first and second floors.)



- 1. \$55.00
- 2. \$55.00
- 3. 82.00
- 4. \$192.00
- 5. \$192.00
- 6. \$137.00
- 7. \$66.00
- 8. \$66.00
- 9. \$82.00
- 10. \$137.00
- 11. \$165.00
- 12. \$275.00
- 13. \$247.00
- 14. \$82.00
- 15. \$55.00