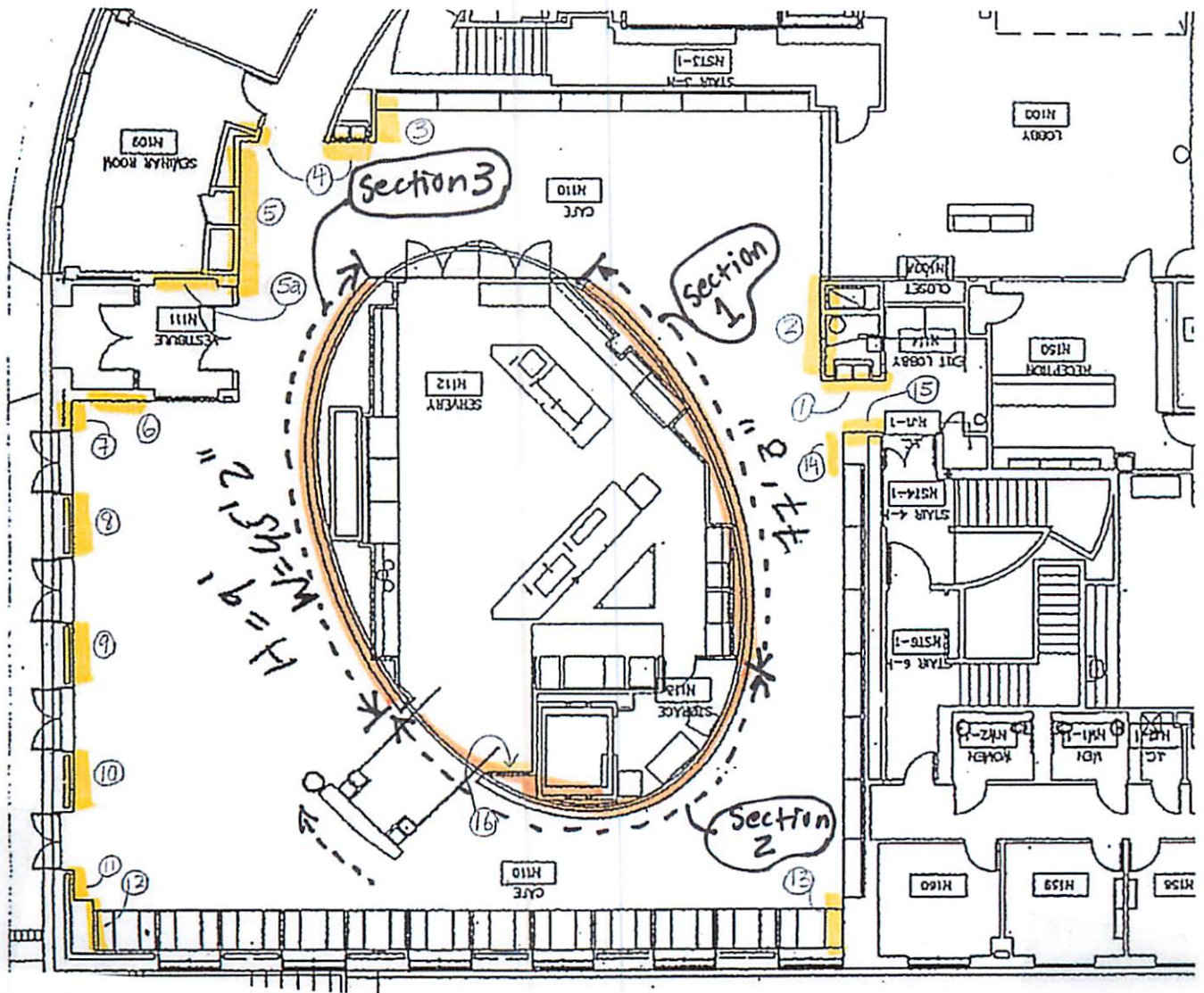


Fisher Family Commons (FFC) Gallery floor plan with Patch-and-Paint Charges Breakout.

Orientation: far left is backyard, far right Cambridge Street side. Highlighted walls with circled number correspond to each wall's patch-and-paint cost.



- | | |
|-------------------------------------|--|
| 1. \$55.00 | 9. \$55.00 |
| 2. \$82.00 | 10. \$55.00 |
| 3. \$55.00 | 11. \$55.00 |
| 4. \$82.00 | 12. \$55.00 |
| 5a. \$192.00 | 13. \$82.00 |
| 5b. \$82.00 (wall inside vestibule) | 14. \$55.00 |
| 6. \$82.00 | 15. \$55.00 |
| 7. \$55.00 | 16. \$82.00 (wall inside café, near registers) |
| 8. \$55.00 | |

Black wall: Section 1 = \$412.00; Section 2 = \$412.00; Section 3 = \$687.00